

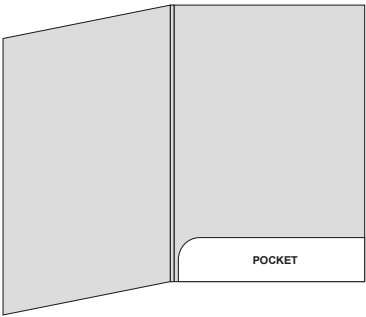
BACK COVER

FRONT COVER

POCKET

Grey box shows size of
business card when inserted
into cut slits.

FLAP





A4 Folder / 4mm Capacity Outside
Fits A4 paper with business card slits in pocket Flat Size: 455 x 372mm


Place your design within **'Artwork' layer** and **delete 'Guide' layer** once finished.
Failure to remove guide layer will result in template printing over artwork design.

- Please ensure:**
- Colour: CMYK (RGB will be converted)
 - Fonts: Embedded or converted to outlines
 - Image Resolution: 300dpi or higher
 - Crop marks and 3mm bleed are included
 - Accepted format: PDF (one file)

*Please upload **one PDF** including two copies of artwork - **one with cutter guide visible and one without.***

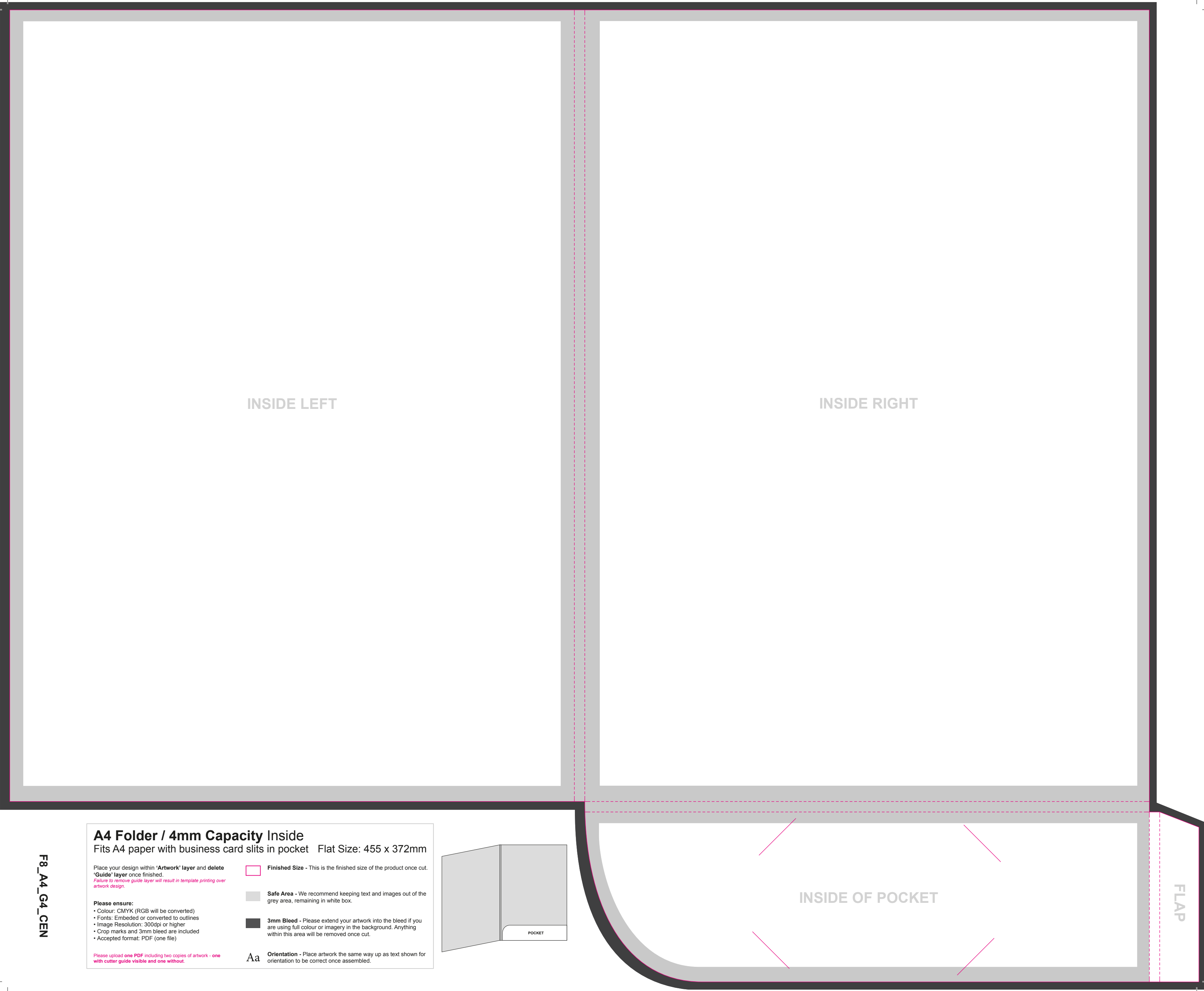
 **Finished Size** - This is the finished size of the product once cut.

 **Safe Area** - We recommend keeping text and images out of the grey area, remaining in white box.

 **3mm Bleed** - Please extend your artwork into the bleed if you are using full colour or imagery in the background. Anything within this area will be removed once cut.

Aa **Orientation** - Place artwork the same way up as text shown for orientation to be correct once assembled.

F8_A4_G4_CEN



INSIDE LEFT

INSIDE RIGHT

INSIDE OF POCKET


FLAP


A4 Folder / 4mm Capacity Inside
Fits A4 paper with business card slits in pocket Flat Size: 455 x 372mm


Place your design within '**Artwork**' layer and delete '**Guide**' layer once finished.
Failure to remove guide layer will result in template printing over artwork design.

- Please ensure:**
- Colour: CMYK (RGB will be converted)
 - Fonts: Embedded or converted to outlines
 - Image Resolution: 300dpi or higher
 - Crop marks and 3mm bleed are included
 - Accepted format: PDF (one file)

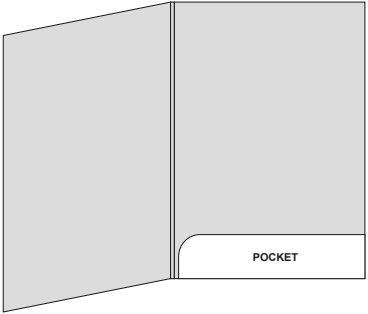
Please upload **one PDF** including two copies of artwork - **one with cutter guide visible and one without.**

 **Finished Size** - This is the finished size of the product once cut.

 **Safe Area** - We recommend keeping text and images out of the grey area, remaining in white box.

 **3mm Bleed** - Please extend your artwork into the bleed if you are using full colour or imagery in the background. Anything within this area will be removed once cut.

Aa Orientation - Place artwork the same way up as text shown for orientation to be correct once assembled.



POCKET